



# Central Queensland Outback & Farmstay Tour



**\$ 4,295.00 p.p.t.s.**  
8 days / 7 Nights

Sunday 25<sup>th</sup> May to Sunday 1<sup>st</sup> June 2025.

**Highlights:** Visit the Stockman's Hall of Fame, Thompson River Sunset Cruise & Dinner Show, Qantas Heritage Museum, Journey through Cobb & Co country, Deluxe Farmstay Experience at Toogunna Plains (5th Generation Sheep Property), Charleville Cosmos Centre & Secret WW2 Base tour, Blackall Wool Scour & the Sale Yards Tour, Barcaldine Tree of Knowledge & The Australian Heritage Workers Centre. Ilfracombe Machinery Mile, plus lots more.

**Includes:** \*Return Qantas Air-Fare Longreach to Sydney.

\*7 Nights Accommodation

\*3 Meals on Most Days (including Morning Teas) as per Itinerary.

\*Entrance Fees to all Tourist Attractions & Tours as per Itinerary.

\* Luxury air-conditioned coach travel.

\* Fully Escorted.

Taylor Made Tours reserves the right to alter or amend any itinerary, accommodation or sightseeing arrangements.

# Itinerary 8 Day Queensland Outback Tour

## DAY 1

## LONGREACH

Depart from Sydney Airport for our morning flight to **Longreach** arriving approx 3pm to meet our coach. A short tour of the town before checking into our accommodation at The Albert Park Motor Inn. Dinner will be at a nearby restaurant.



## DAY 2

## COOPER CHANNEL COUNTRY / TOOGUNNA PLAINS FARMSTAY

Early breakfast as we leave **Longreach** at 8.00am and head through what's known as the Cooper Channel Country via the Thomson River Development Rd in the Barcoo Shire.

We stop for morning tea at **Stonehenge**, and then follow the Thomson Development Road via Jundah to the famous Western Star Hotel in **Windorah** for lunch.

Leaving here we cross over the Cooper Creek onto the Diamantina Development Rd to **Toogunna Plains Farmstay**, some 20 mins east of **Eromanga**, for our 2 nights accommodation. A well earned rest will be enjoyed over sunset drinks around the fire, followed by a beautifully home cooked dinner.

All our meals will be served on the farm.



## DAY 3

## TOOGUNNA PLAINS TOUR / EROMANGA HISTORY MUSEUM



After breakfast we start a three hour station tour visiting property landmarks including abandoned homesteads, oil fields, shearing sheds and geological formations. We see sheep and cattle grazing on the 5th generation property.

Learn about the pastoral history and day-to-day running of the station. The tour includes a delicious, home-baked morning tea.

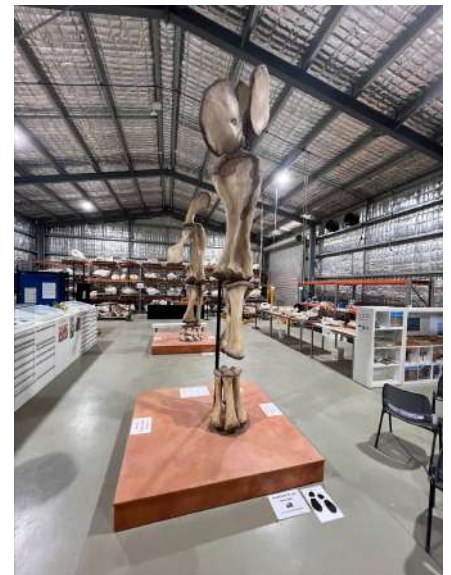
We complete the morning with a generous buffet lunch, sitting at the long table in the Shearing Shed.

After lunch it's a short drive along the Cooper Development Road to Eromanga, Australia's "furthest town from the sea". This small town is surrounded by large pastoral properties. It is also home to the Eromanga Oil & Gas Basin which produces over half million barrels of oil each year.

We will visit the Eromanga Natural History Museum for a guided tour. The Museum is home to Australia's largest dinosaur discovery - fondly named locally as "Cooper", after the nearby Cooper Creek. Cooper is in the top ten of the largest dinosaurs in the world

We learn about the significant dinosaur fossils found nearby the town, and how they are meticulously "brought to life". The museum is still finding new discoveries in the area where they have previously never been found.

We complete the big day back at our farmstay for a well earned rest, before a yarn sharing experiences with pre dinner drinks around the fire, ahead of dinner that night.



## DAY 4

## CHARLEVILLE

After breakfast we bid farewell to our host at **Toogunna Plains** before arriving at the **Quilpie** Visitor Information Centre for morning tea. The interactive museum displays the rugged history of the early pioneers, and the Shire Gallery. The Centre is also adjoining Quilpie's unique Military History and Railway Museum.

We drop into St Finbarr's, the Roman Catholic Church, where the altar, font and lectern have been made out of opal rocks. Bill and his sister Mary Durack, author of Kings in Grass Castles, donated the beautiful glass windows in the western side of the church, in memory of their famous ancestors.

We leave Quilpie & travel east via the Foxtrap Roadhouse at **Cooladdi** (claimed as Australia's smallest town by population) before arriving in **Charleville** for a picnic lunch at the Cosmos Centre. After lunch we then have a guided tour of Charleville Airport when the site was handed over to the United States Military as a top secret site during World War II. The area was a village in its own right with over 3,000 United States Servicemen serving in the area. We then proceed downtown to inspect the Steiger Vortex Gun, one of six used in the area during the great drought of the late 1800's. No rain fell and the inventor (Clement Wragge) rapidly left town ! We conclude the day & make our way to our motel Waltzing Matilda Inn for our overnight accommodation and dinner thereafter.

## DAY 5

## BLACKALL

We leave Charleville & travel north along the Landsborough Way arriving at **Tambo** for morning tea, allowing us time to visit “Tambo Teddy Bears”. We then continue north for **Blackall** & visit the famous “Wool Scour” for a picnic lunch followed by a 1hr guided tour, then afterwards we visit the Blackall Saleyards for a tour by the legendary Scott Lusby.

We check into our overnight accommodation, The Oasis Motor Inn Blackall, ahead of dinner being served in the adjacent restaurant.



## DAY 6

## BARCADDINE / LONGREACH

Breakfast at leisure before departing Blackall around 9.00am to travel to **Barcaldine**, a centre for the district’s wool & cattle industries. We will arrive in “Barky” around 10.15am for morning tea. We take a look at the “Tree of Knowledge”, which was the meeting place during the famous Shearers Strike of 1891 that ultimately led to the formation of the Australia Labour Party.

Leaving here we walk down to the Australian Workers Heritage Centre, one of Outback Queensland’s premier tourist destinations and a National Monument to our working men and women. We will have a BBQ lunch here before leaving for **Ilfracombe**.

The Lynn Cameron Machinery Mile hosts a range of equipment from standing engines to earthmoving machinery. A wonderful display of machinery, some of it very rare and almost all collected within 100 miles of the town. Also a chance to look at the Heritage Museum. The townsite was part of “Wellshot Station”. In 1892 it was regarded as the biggest sheep station in the world. We will arrive back in **Longreach** to check into our accommodation at The Albert Park Motor Inn for the next 2 nights. Dinner is at a nearby restaurant.



## DAY 7

## LONGREACH

Breakfast at leisure before we leave at 9.00am to visit the **Stockman's Hall of Fame**, one of the greatest exhibits in country Australia. This gives a great understanding of the history in how sheep and cattle were moved through the bush as well as acknowledging the importance of the indigenous groups as well. A great snapshot of the outback history. Lunch is at your own expense at the Centre.

After lunch, we then enjoy the Outdoor Stockman exhibition, which showcases the skills of the Stockman and his horse.



This afternoon, we will visit the nearby Qantas Museum for a self-guided tour to understand the history of the founders behind Qantas.

We then head back to our motel for a rest ahead of being picked up for our Sunset Cruise followed by our Dinner & Show on the banks of the Thomson River. This is a great night to finish a memorable tour of The Queensland Outback, as we enjoy sunset drinks on our cruise ahead of an entertaining show with bushmans poetry and tucker around the fire.



**DAY 8**

**HOME**

Breakfast at leisure as you have time for shopping in Longreach before we depart for the airport for our afternoon flight home arriving in Sydney Airport in the early evening.

